

COMUNICACION TO STAKEHOLDERS

Reference year 2023



INTEGRATED MANAGEMENT SYSTEM

1. INTRODUCTION

1.1. PRESENTATION

Sling Supply International SA (SLINGSINTT) is a company dedicated to the marketing, design, manufacturing and certification of lifting elements with an experience of more than 40 years.

We serve a wide range of industries, including wind energy, foundries, automotive, railways, ports, shipyards and construction.

We offer a personalized and comprehensive service to each client.

All of this, with the clear objective of satisfying our clients, the people who work with us and providing quality of life to citizens, promoting environmental protection and promoting sustainability.

SLINGSINTT is headquartered in Spain and operates throughout the world.

Since October 2022, Sling Supply International S.A. is part of the Royal Van Beest Group.



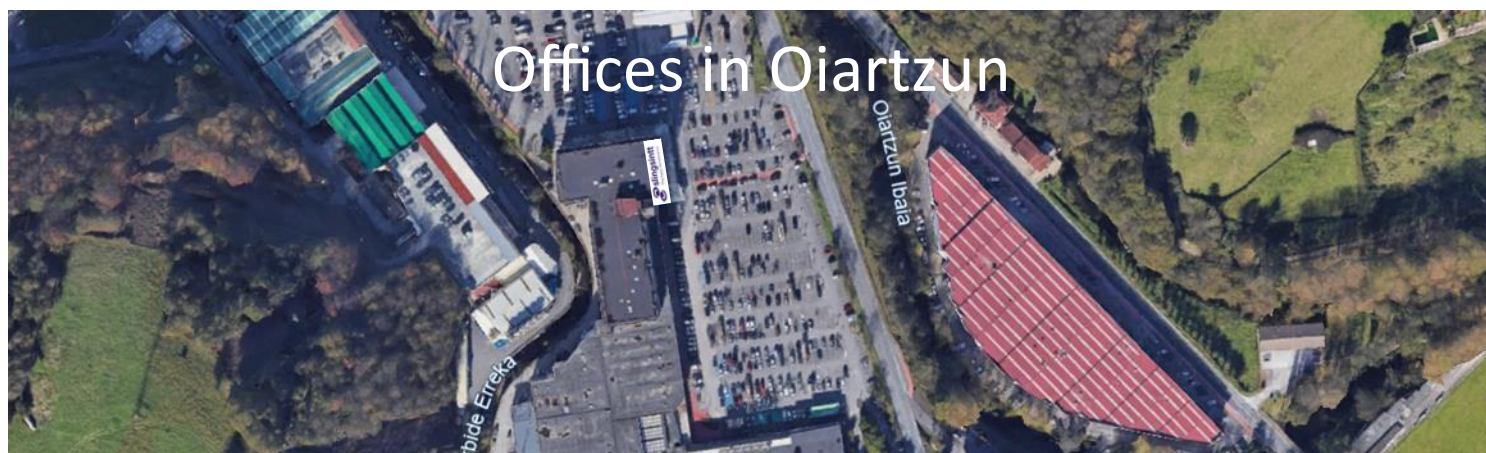
1.2. UBICACIÓN

BUSINESS NAME:	SLING SUPPLY INTERNATIONAL S.A.
CIF:	A20076360
REGISTERED ADDRESS:	Astigarragako bidea 2 4th floor right office nº 6
WEB PAGE:	WWW.SLINGSINTT.COM
EMAIL:	SLINGSINTT@SLINGSINTT.COM
PHONE:	943 522 300
CNAE:	4669

Pavilions of polygon 103

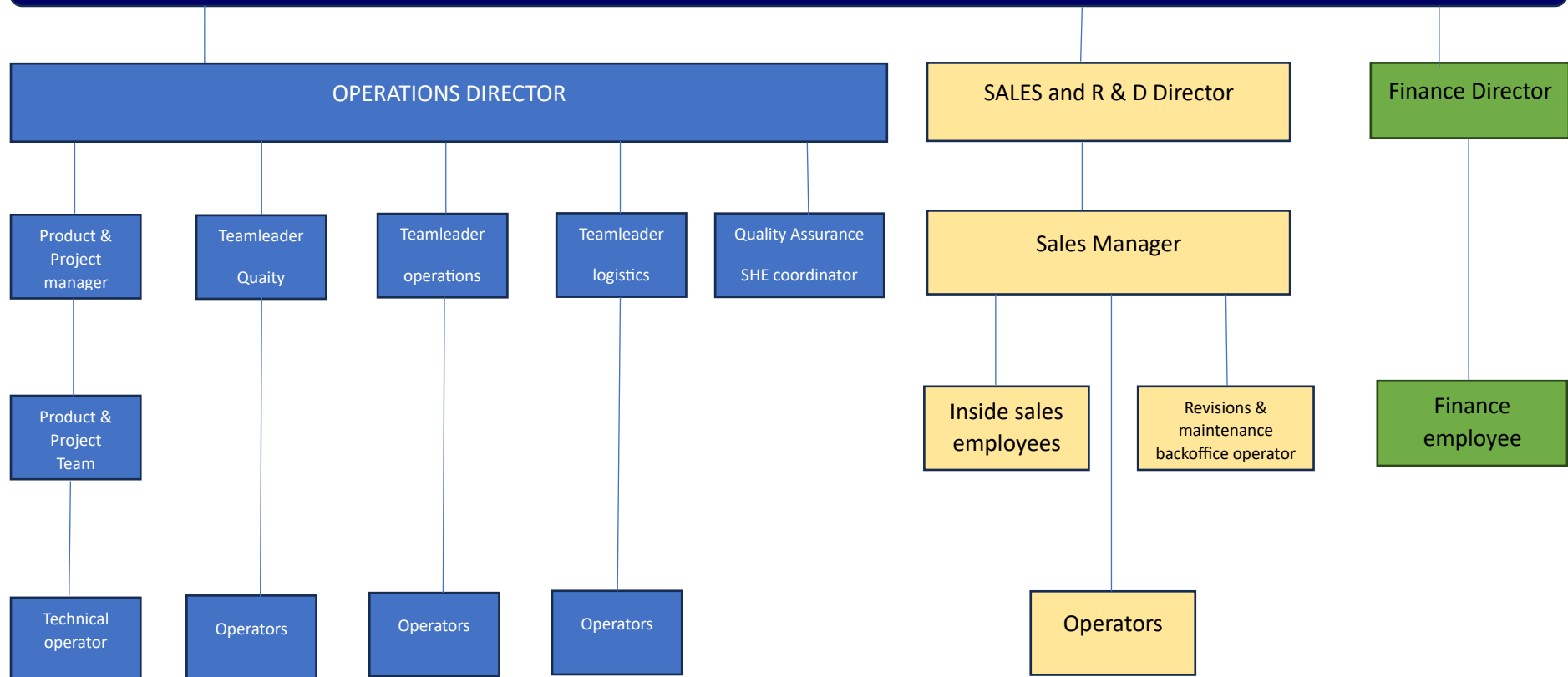


Offices in Oiartzun



1.3 ORGANIZATION

MANAGING DIRECTOR



1.4. INTEGRATED MANAGEMENT POLICY

SLING SUPPLY INTERNATIONAL SA Through it, the direction states that the company carries out the service at the national and international level, always offering as a priority argument in its offer the suitability of the services provided and its seriousness in the treatment. The achievement of a quality service, respectful of the environment and safety and health at work under **ISO 9001/14001/45001 standards (in its latest version)** is a policy arising from Management and shared by the entire organization, guiding these standards to the different activities that **SLING SUPPLY INTERNATIONAL SA** offers:

Activity	“ Marketing and Mechanical Assembly of Lifting Elements” “Design, manufacturing, and approval of Lifting Elements” “Review and Repair of Lifting Elements”
-----------------	---

By choosing us, clients can be sure of finding a reliable response from the first contact until the total completion of the contracted services.

The integrated management policy of our company is to consolidate this reality by always improving the result of the service and attention to the requirements of our clients. The management system described in the management manual and work process sheets has been developed under your direction and has your full support.

Management controls and confirms all this documentation and notifies all staff of the obligation to follow all guidelines derived from this process to achieve the greatest quality guarantee that we can offer. Likewise, it invites all staff to participate, through their suggestions, to achieve continuous improvement and total identification with the management policy.

SLING SUPPLY INTERNATIONAL S.A. Its **objectives** are:

- The quality of the service it offers meets the requirements of each client, which ensures the long-term success of the company.
- Respect for the environment through the company's environmental management.
- The safety and health of its workers.

To this end the direction, it establishes, **declares and assumes the following principles:**

- Service quality is the result of planned and systematic actions of PREVENTION, DETECTION, CORRECTION and CONTINUOUS IMPROVEMENT throughout the cycle.
- Contractual demands, customer requirements and expectations are the only criteria to establish the standard for the quality of our products/services.
- Quality requirements and contractual demands must be effectively executed in specifications that will be communicated to suppliers in a complete and timely manner.
- Quality is a common work of all areas of the company, each of them assumes that it is the client and supplier of departments and people of the organization.

- Each employee is responsible for the quality of their work. The person responsible for quality is responsible for promoting the implementation of the quality policy and objectives, and for verifying their execution through audits.
- The application of this policy requires the integration of the entire human team of the company, therefore, management considers **MOTIVATION AND TRAINING** actions as priorities.
- Define specific and quantifiable objectives, as well as their monitoring.

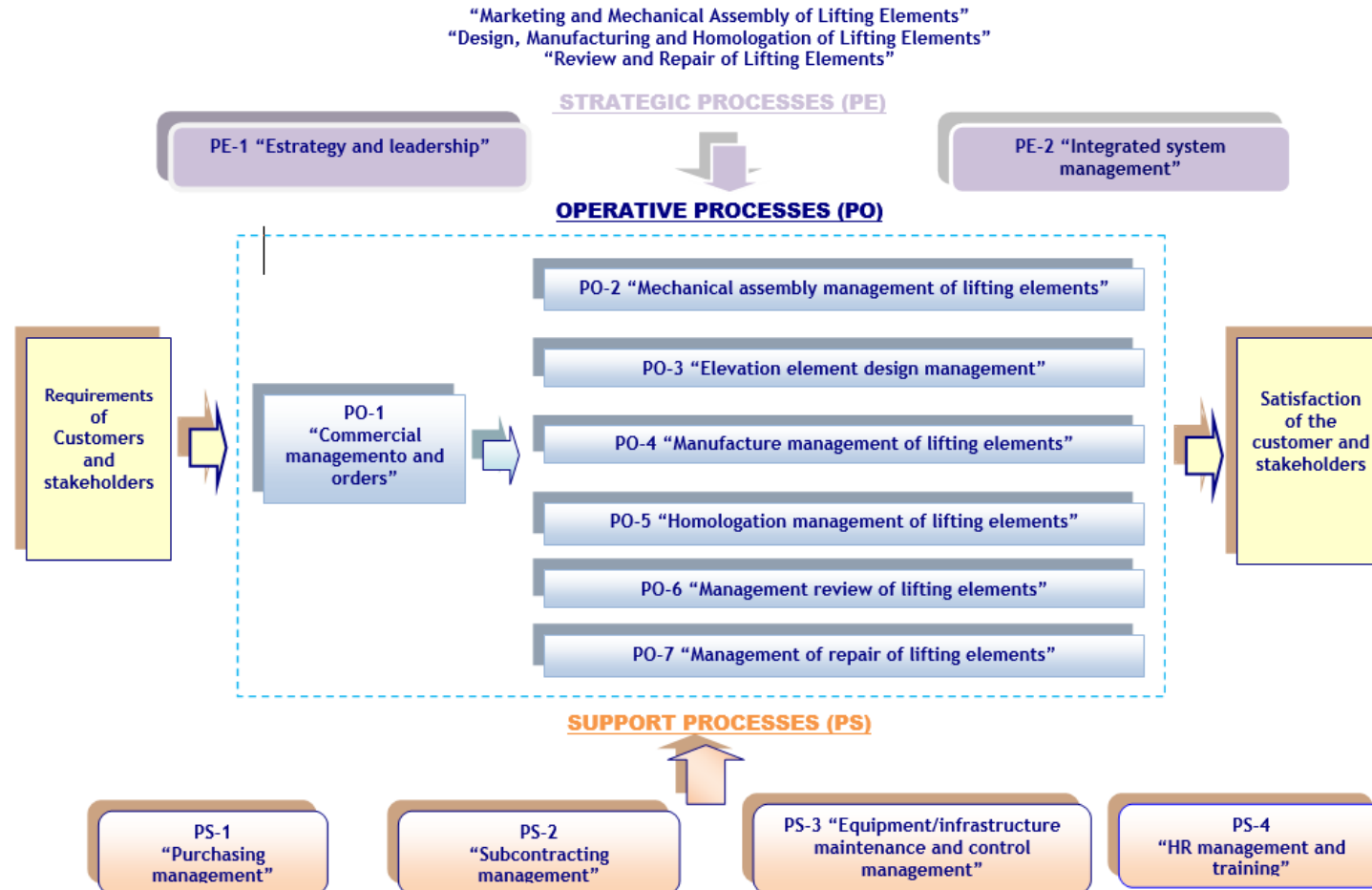
We always comply and will comply with our work philosophy which is none other than, **“get things done right the first time”** and if not, **“know the causes”** of the error. With all this, the aim is to reduce risk and non-quality costs to optimize **the processes** necessary to fulfill our service.

This policy is appropriate to the purpose and context of the organization and supports our strategic direction, and provides a framework of reference for establishing quality, environmental and workplace safety objectives, which allows us to acquire the commitment **to:**

- **comply with the applicable requirements**, legal and other requirements related to our activity, environmental and safety at work that we subscribe to.
- **environmental protection**, including pollution prevention, and other specific commitments relevant to the organization's context.
- provide **safe and healthy working conditions** for the prevention of work-related injuries and ill health and always appropriate to the purpose, size and context of our organization and the specific nature of our OSH risks and our OSH opportunities.
- eliminate hazards and **reduce OSH risks**.
- consultation **and participation** of workers, and workers' representatives.
- **continuous improvement** of the quality, environmental, safety and health management system to improve quality, environmental and safety performance.



1.5 STRATEGIC PROCESSES



Edition date: July 2022

2. SIGNIFICANT ENVIRONMENTAL ASPECTS AND ASSOCIATED IMPACTS

2.1. IDENTIFICATION OF ASPECTS

Sling Supply International S.A. identifies and evaluates the significance of its environmental aspects (which give rise to associated impacts). The environmental aspects identified in the company for the year 2023 have been the following:

LIFE CYCLE PHASE	ASPECT	TYPE	ASSOCIATED IMPACT
PRODUCTION	WATER CONSUMPTION	AC	DEPLETION OF RESOURCES
PRODUCTION	ELECTRICITY CONSUMPTION	EC	DEPLETION OF RESOURCES
TRANSPORT	WOODEN PALLETS AND TRUSSES	CMA	DEPLETION OF RESOURCES
TRANSPORT	CARDBOARD BOXES	CMA	DEPLETION OF RESOURCES
TRANSPORT	ADHESIVE TAPES	CMA	DEPLETION OF RESOURCES
TRANSPORT	STRIP	CMA	DEPLETION OF RESOURCES
TRANSPORT	STRETCH FILM/BUBBLE	CMA	DEPLETION OF RESOURCES
PRODUCTION	CLEANING PRODUCTS	CMA	DEPLETION OF RESOURCES
PRODUCTION	WORKSHOP PAPER	CMA	RESOURCE DEPLETION
PRODUCTION	WORKSHOP RAG	CMA	DEPLETION OF RESOURCES
PRODUCTION	PPE	CMA	DEPLETION OF RESOURCES
PRODUCTION	CUTTING DISKS	CMA	DEPLETION OF RESOURCES
PRODUCTION	HEAT SHRINK TUBING	CMA	DEPLETION OF RESOURCES
PRODUCTION	CHEMICAL SLIP	CMA	DEPLETION OF RESOURCES
PRODUCTION	DISTILLED WATER	CMA	DEPLETION OF RESOURCES
PRODUCTION	TONER CONSUMPTION	CMA	DEPLETION OF RESOURCES
PRODUCTION	OFFICE SUPPLIES	CMA	DEPLETION OF RESOURCES
PRODUCTION	ALCOHOL	CMA	DEPLETION OF RESOURCES
PRODUCTION	THREADS AND FABRIC	CMA	DEPLETION OF RESOURCES
PRODUCTION	AEROSOL SPRAYS	CMA	OZONE LAYER DEPLETION
PRODUCTION	PAINT	CMA	ATMOSPHERIC POLLUTION (VOC)
PRODUCTION	SEPIOLITE	CMA	DEPLETION OF RESOURCES
PRODUCTION	SIKA	CMA	DEPLETION OF RESOURCES
PRODUCTION	SOLVENT	CMA	POLLUTION ATMOSPHERIC (VOC)
PRODUCTION	OIL	CMA	DEPLETION OF RESOURCES
PRODUCTION	CONTACT QUEUES	CMA	POLLUTION ATMOSPHERIC (VOC)
PRODUCTION	WELDING GASES	CMA	DEPLETION OF RESOURCES
PRODUCTION	DIESEL CONSUMPTION	CMA	DEPLETION OF RESOURCES
PRODUCTION	PAPER CONSUMPTION	CP	DEPLETION OF RESOURCES
PRODUCTION	STAINLESS STEEL SHEETS	M.P.	DEPLETION OF RESOURCES
PRODUCTION	ALUMINUM SHEET	M.P.	DEPLETION OF RESOURCES
PRODUCTION	INERT WASTE	RNP	LANDFILL OCCUPATION
PRODUCTION	WASTEPAPER AND CARDBOARD	RNP	LANDFILL OCCUPATION
PRODUCTION	PLASTIC WASTE PACKAGING	RNP	LANDFILL OCCUPATION
PRODUCTION	WASTE LIGHT PACKAGING	RNP	LANDFILL OCCUPATION
PRODUCTION	WOOD WASTE	RNP	LANDFILL OCCUPATION
PRODUCTION	WASTE TONER	RNP	LANDFILL OCCUPATION
PRODUCTION	ALKALINE BATTERIES	RNP	LANDFILL OCCUPATION

PRODUCTION	SCRAP	RNP	LANDFILL OCCUPATION
PRODUCTION	ELECTRICAL AND ELECTRONIC WASTE	RNP	LANDFILL OCCUPATION
PRODUCTION	NON-VALUEABLE ORGANIC	RNP	LANDFILL OCCUPATION
PRODUCTION	IMPREGNATED MATERIAL	PR	SOIL POLLUTION
PRODUCTION	OIL WASTE	PR	SOIL POLLUTION
PRODUCTION	AEROSOLS WASTE	PR	SOIL POLLUTION
PRODUCTION	PAINT WASTE	PR	SOIL POLLUTION
PRODUCTION	MERCURY BATTERIES	PR	SOIL POLLUTION
PRODUCTION	CONTAMINATED PLASTIC CONTAINERS	PR	SOIL POLLUTION
PRODUCTION	CONTAMINATED METAL CONTAINERS	PR	SOIL POLLUTION
PRODUCTION	CO2 EMISSIONS	EA	GLOBAL WARMING
PRODUCTION	EXTERNAL NOISE	RE	DISADVANTAGES LOCAL POPULATION/AFFECTATION
PRODUCTION	WASTE	V	WATER/SOIL POLLUTION

In the evaluation carried out at the beginning of 2023, the aspects that were found to be significant are the following:

- Electrical consumption
- Adhesive tapes
- workshop hand paper
- welding gases
- Paper consumption (office)
- Non-recoverable organic waste
- Oil residue
- paint residue
- Empty contaminated plastic containers

Sling Supply International S.A., consistent with the significance of its aspects, designs the document of good environmental practices and establishes the following objectives:

- Reduce electricity consumption.
- Reduce office paper consumption.

2.2. EVALUATION OF SIGNIFICANCES

METHOD OF ASSESSMENT OF DIRECT ASPECTS

The assessment of the identified environmental aspects is carried out based on the following method:

ENVIRONMENTAL ASPECT	C1	C2	C3	WORTH	Where:
CONSUMPTION	x	x		C1 x C2	C1 = Value related to the magnitude or frequency of the aspect
WASTE	x	x		C1 x C2	
NOISE	x		x	C1 x C3	C2= Value relative to the toxicity and/or danger of the aspect
EMISSIONS	x		x	C1 x C3	
WASTE	x		x	C1 x C3	C3= Value relative to the approach to the reference limit

HIERARCHY CRITERIA

The aspects are ranked as follows according to the result of the total assessment:

ASSESSMENT	AMOUNT	ASPECT CLASSIFICATION
$60 \leq V$	> 100KG	Significant
$V < 60$	-	Not significant

CRITERION: In all environmental evaluations carried out in each course, aspects related to improving efficiency will be considered significant aspects, that is, electricity consumption.

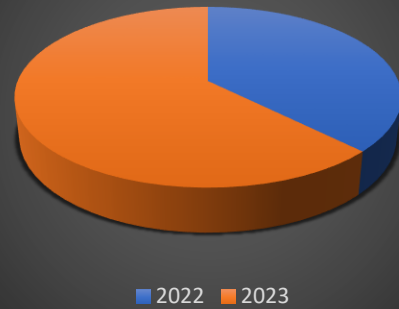
3. CONSUMPTION/HAZARDOUS WASTE

	2022	2023
Electricity consumption (Kw)	46731	50517
Water consumption (M ³)	82	137
Paper copies made	89794	60979
Hazardous waste (kg)	1235	481

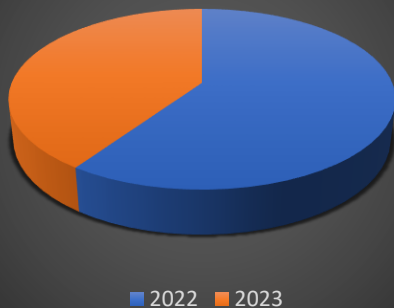
Electrical consumption (Kwh)



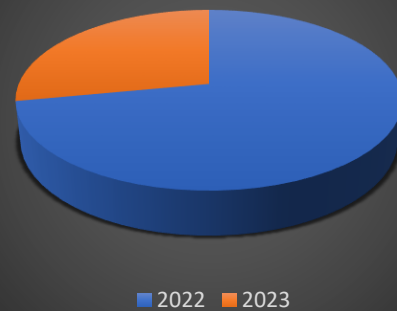
Water consumption (M3)



Paper copies made



Hazardous waste (Kgr)



4. LEGAL REQUIREMENTS (ENVIRONMENT)

Sling Supply International S.A. has a subcontracted service that identifies the legal requirements applicable to the organization, for the environmental field (discharges, noise, emissions, soil, etc.).

In both internal and external audits, the degree of compliance with the applicable requirements is evaluated. The result for the year 2023 is 0 breaches.

The main legal provisions that Sling Supply International SA complies with in the environmental field are:

LEGAL PROVISIONS	
<ul style="list-style-type: none">• Activity legalization process	<ul style="list-style-type: none">• Generation of batteries and accumulators
<ul style="list-style-type: none">• Industrial activity	<ul style="list-style-type: none">• Generation of waste electrical and electronic equipment
<ul style="list-style-type: none">• Environmental responsibility	<ul style="list-style-type: none">• Disposal of own vehicles
<ul style="list-style-type: none">• Residuous generation	<ul style="list-style-type: none">• Generation of waste from vehicles at the end of their useful life
<ul style="list-style-type: none">• Generation of urban waste	<ul style="list-style-type: none">• Generation of waste from out-of-use tires
<ul style="list-style-type: none">• Generation of hazardous waste	<ul style="list-style-type: none">• Generation of non-hazardous waste
<ul style="list-style-type: none">• Generation of used oils	<ul style="list-style-type: none">• Generation of packaging waste
<ul style="list-style-type: none">• Discharge to collector	<ul style="list-style-type: none">• Noise emission to the outside
<ul style="list-style-type: none">• Use of wooden packaging for export	<ul style="list-style-type: none">• Telematic procedures

5. HEALTH AND SAFETY AT WORK

5.1. HEALTH AND SAFETY TRAINING AT WORK

Sling Supply International S.A. staff have completed various training on health and safety at work.

- Health and safety training at work
- Risk prevention training in offices
- First aid training
- C.12 training for operators in mechanics, maintenance and repair of machines, industrial equipment and/or electromechanical equipment (service operators)
- C.25 training for quality control, verification, and inspection work on manufacturing course material and on finished products in the sector (quality operators).
- Training C.27 forklift drivers (part of the workforce).
- Training C.28 overhead crane operators (part of the workforce).

For the year 2024, **Sling Supply International S.A.** already has various training plans on health and safety at work.

- Ergonomic training (for the entire workforce)
- Training C.27 forklift drivers (for the rest of the workforce)
- Training C.28 overhead crane operators (for the rest of the staff).
- C.30 training for warehouse and logistics and supply operators in manufacturing processes.
- C.9 training for active workers. pre-assembly, assembly, format change and factory assembly.

5.2. LEGAL REQUIREMENTS FOR HEALTH AND SAFETY AT WORK

Sling Supply International S.A. has a subcontracted service that identifies the legal requirements applicable to the organization, for the field of health and safety at work (industrial safety, prevention of occupational risks).

In both internal and external audits, the degree of compliance with the applicable requirements is evaluated. The result for the year 2023 is 0 defaults.

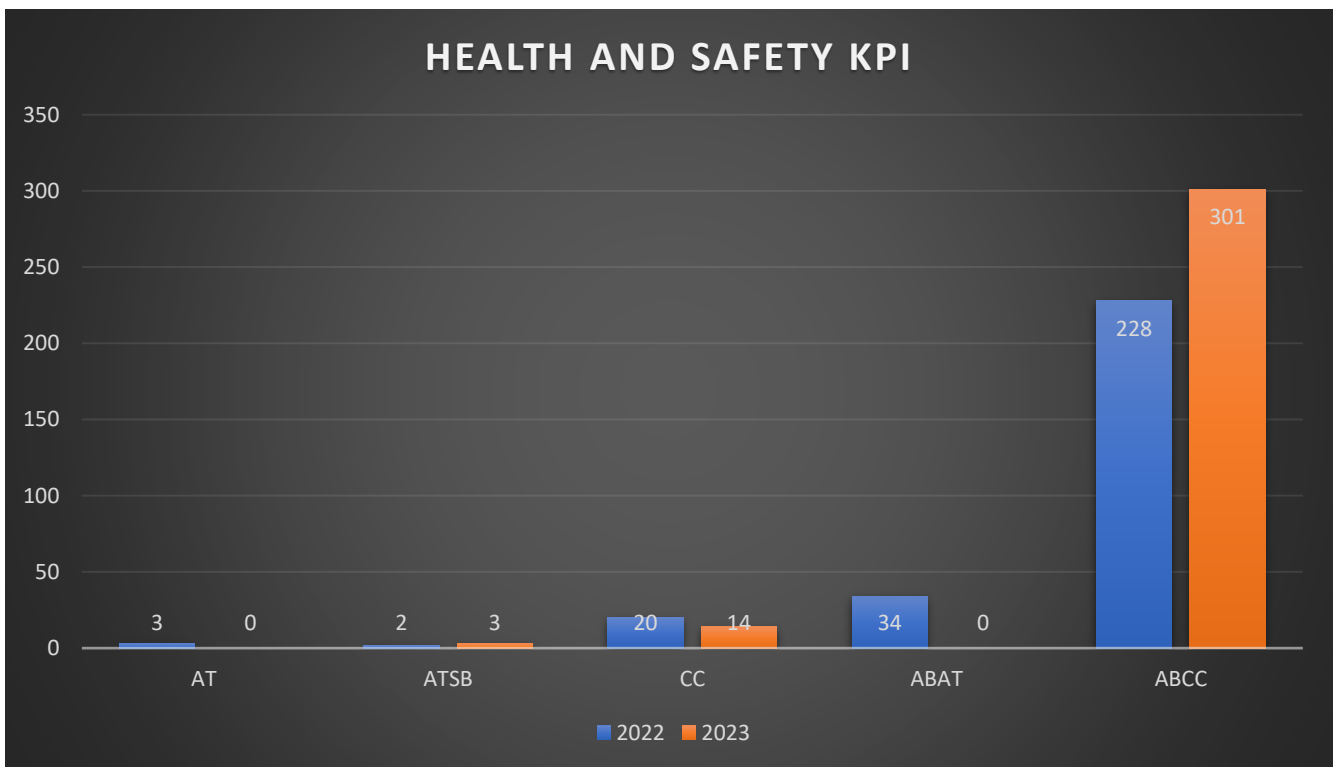
The main legal provisions that **Sling Supply International S.A** complies with in the field of health and safety at work are:

LEGAL PROVISIONS OF INDUSTRIAL SAFETY	
• Industrial facilities	• Fire protection
• Low voltage	• Water-legionella systems
• Thermal installations	• pressure equipment
LEGAL PROVISIONS FOR PREVENTION OF WORKPLACE RISKS	
• Carcinogenic agents	• Chemical agents
• Explosive atmospheres	• Electric risk
• Chemical substances and preparations	• Remote work. Telecommuting
• mechanical vibrations	• Rights and obligations
• Prevention organization	• Prevention plan
• risk assessment	• Preventive activity planning
• Consultation and participation	• Training and information
• Health surveillance	• Emergency measures
• Serious and imminent risk	• Preventive resource
• Coordination of business activities	• Data Protection
• Smoking	• Health and safety signs at work
• Work teams	• Marketing of machinery
• Display screens	• PPE
• Work places	• Manual load handling
• Noise	•

In 2023, **Sling Supply International S.A.** has integrated into its management system the protocol for action in cases of sexual and/or gender-based harassment.

5.3. HEALTH AND SAFETY KPI




INDICATOR TYPE	2022	2023
Work accidents with sick leave-AT	3	0
Work accidents without sick leave-ATSB	2	3
Leaves due to common contingencies-CC	20	14
Absenteeism due to sick leave (days)-ABAT	34	0
Absenteeism due to common contingencies (days)-ABCC	228	301



6. SUSTAINABLE DEVELOPMENT GOALS

In the following section, we try to explain how **Sling Supply International S.A.** contributes to the sustainable development goals.

SDG	HOW SLINGSINTT CONTRIBUTE TO EACH GOAL
 <p>3 SALUD Y BIENESTAR</p>	<p>Health & Wellness</p> <p>Sling Supply International S.A. contributes to this objective by carrying out psychosocial studies of its staff, incorporating anti-harassment measures, carrying out periodic medical examinations of its employees and promoting conciliation measures beyond those established by legislation.</p>
 <p>4 EDUCACIÓN DE CALIDAD</p>	<p>Quality education</p> <p>Sling Supply International S.A. has signed a contract with the University of Mondragón to bring in interns to gain experience.</p> <p>Sling Supply International S.A. carries out an annual training plan to improve the training of its workers.</p>
 <p>5 IGUALDAD DE GÉNERO</p>	<p>Gender equality</p> <p>A protocol has been implemented in Sling Supply International S.A. against sexual and/or gender-based harassment.</p>
 <p>7 ENERGÍA ASEQUIBLE Y NO CONTAMINANTE</p>	<p>Affordable and non-polluting energy</p> <p>Sling Supply International S.A. does not currently contribute substantially to this SDG at present, it is mandatory for companies to act in this regard. To contribute to this, by 2030 all energy must come from renewable energies.</p>
 <p>8 TRABAJO DECENTE Y CRECIMIENTO ECONÓMICO</p>	<p>Decent work and economic growth</p> <p>Decent working conditions are guaranteed to all company employees, ensuring non-discrimination in hiring, remuneration, benefits, training, and promotion.</p> <p>Freedom of association and collective bargaining are guaranteed.</p> <p>The local economy is promoted by supporting local companies.</p> <p>Tax laws and regulations are complied with to promote economic growth.</p> <p>Permanent contracts and opportunities for promotion and professional development are guaranteed to employees.</p>

 <p>8 TRABAJO DECENTE Y CRECIMIENTO ECONÓMICO</p>	<p>A health and safety management system (ISO 45001) has been implemented in all the company's facilities and is required of its suppliers to reduce occupational accidents and illnesses throughout the value chain.</p>
 <p>12 PRODUCCIÓN Y CONSUMO RESPONSABLES</p>	<p>Responsible production and consumption</p> <p>All materials used for packaging and packaging the products are being changed for fully recyclable and biodegradable products.</p> <p>A computer system change is being made to drastically reduce the use of paper in our offices.</p> <p>Integrated waste management is carried out with the final objective of reducing it drastically.</p>
 <p>13 ACCIÓN POR EL CLIMA</p>	<p>Climate action</p> <p>The calculation of the carbon footprint has been carried out with the aim of reducing greenhouse gas emissions.</p> <p>The ISO 14001 environmental management system has been implemented.</p> <p>Training will be carried out to raise awareness and sensitization on environmental matters.</p>



www.slingsintt.com



slingsintt@slingsintt.com



Headquarters

Tel: +(34) 943 522 300

Fax: +(34) 943 516 938

Engineering Department

Tel: +(34) 943 344 116

Fax: +(34) 943 344 116